

Michigan Garden Clubs, Inc. District 5

Member of National Garden Clubs, Inc. (NGC), Central Region Garden Clubs, Inc., and Michigan Garden Clubs, Inc. presents

# Mi flora and fauna

An NGC Standard Flower Show



**Friday, September 12, 2025 (12N to 5 PM)**

**Saturday, September 13, 2025 (9 AM to 1 PM)**

**Wagoner Community Center / Manistee Senior Center**

260 St. Mary S. Parkway

Manistee, Michigan 49660

231-723-6477

Free and open to the Public

## WELCOME LETTER

To our Garden Club Members, Judges, Friends, and Guests -- Our District 5 Clubs are excited to present an NGC Standard Flower Show, **Mi flora and fauna**. Our programs, educational courses, practical experience with gardening and floral design, and past successful flower shows have set the stage for this most amazing event. We look forward to everyone participating in some manner. That could include growing and entering horticulture, creating a floral design, displaying photographs, decorating bird houses, or serving as clerks, hostesses, committee chairs or committee members.

We based the horticultural classes on what should be flowering around the time of our show based on our collective experience. That information was helpful in identifying the types of flowers, plants, herbs, trees, and shrubs that you already grow in your homes and gardens, and it builds upon our 2024 District 5 Horticulture Specialty Flower Show.

The theme for this fall flower show is flora and fauna predominant in the State of Michigan. We chose the American Robin (*Turdus migratorius*) and the apple blossom (*Malus coronaria*) for the art work to carry the theme throughout the show. The interactive work of nature – both flora and fauna -- is certainly a consideration for gardeners, landscapers, and environmentalists. Your tour through the flower show can start with the Horticulture Division where you can ooh and aah over eighty classes of annuals, perennials, herbs, bulbs, potted plants, and more. Then turn your attention to original floral designs, informative and interesting education exhibits, botanical arts designs, artistic crafts, and photographs. A wonderful feature of this show includes exhibits from students at local public schools and exhibits created by members of Manistee County's Senior Center.

We would like to thank our sponsors for their generous funding. This show will be a culmination of everyone working together to provide an interesting, educational, and entertaining time. New members are always welcome, too! Please enjoy your time with us.

*Mary Jo*

Mary Jo McElroy

Show General Chair

Portage Lake Garden Club

*Vickie*

Vickie Johnson

Meeting Chair

Spirit of the Woods Garden Club

## TABLE OF CONTENTS

Welcome Letter	2
Table of Contents	3
Flower Show Committee Leaders	4
Flower Show Time Schedule	5
General Rules for Exhibitors – All Divisions	5 --7
Judging and Awarding of Ribbons – All Divisions	8 -- 10
Division I Horticulture:	11
Horticulture Rules	11 -- 13
Horticulture Scale of Points	13
Horticulture Sections and Classes	13 -- 18
Division II Design:	19
Design Rules	19 -- 21
Design Scale of Points	21
Design Sections and Classes	21 -- 24
Division III Education:	25
Education Rules	25 -- 26
Education Scale of Points	26
Education Exhibits	27
Division IV Youth and Sponsored Group:	28
Youth / Sponsored Group Rules	28
Youth / Sponsored Group Sections and Classes	29 -- 30
Youth / Sponsored Group Scales of Points	29 -- 30
Division V Botanical Arts:	31
Botanical Arts Design Rules, Section and Classes	31 -- 33
Botanical Arts Artistic Crafts Rules, Section and Classes	33 -- 34
Botanical Arts Photography Rules, Section and Classes	34 – 36
Protected Michigan Native Plants	36 -- 37
Entry Tag Completion Instructions & Sample Entry Tags	38 -- 39
Location of <b>Mi flora and fauna</b>	40

## FLOWER SHOW COMMITTEE LEADERS

<b>COMPONENT / COMMITTEE</b>	<b>ROLE</b>	<b>NAME</b>	<b>CONTACT INFORMATION</b>
STANDARD FLOWER SHOW LEADERSHIP	General Chair	Mary Jo McElroy	<a href="mailto:maryjomcelroy@sbcglobal.net">maryjomcelroy@sbcglobal.net</a> 614-325-1717
SCHEDULE	Chair	Mary Jo McElroy	<a href="mailto:maryjomcelroy@sbcglobal.net">maryjomcelroy@sbcglobal.net</a> 614-325-1717
STAGING and PROPERTIES	Co-Chairs	Shirley Brooks Marti Zemer	<a href="mailto:shirleyb1214@me.com">shirleyb1214@me.com</a> 727-637-4374 <a href="mailto:mlzemer@gmail.com">mlzemer@gmail.com</a> 989-666-1848
ART and SIGNAGE	Chair	Bonnie Garbrecht	<a href="mailto:garbrechtb@gmail.com">garbrechtb@gmail.com</a> 269-832-5992
HORTICULTURE (Entries, Classification, and Placement)	Co-Chairs	Connie Veverica Jaye Barends	<a href="mailto:cveverica@yahoo.com">cveverica@yahoo.com</a> 231-923-8925 <a href="mailto:emeraldangel2011@hotmail.com">emeraldangel2011@hotmail.com</a> 231-225-8614
DESIGN	Chair	Mary Jo McElroy	<a href="mailto:maryjomcelroy@sbcglobal.net">maryjomcelroy@sbcglobal.net</a> 614-325-1717
DESIGN CONSULTANTS (Entries, Classification, and Placement)	Consultants	Pam Tompke Jaye Barends Susan Halloran	<a href="mailto:tompkep@gmail.com">tompkep@gmail.com</a> 231-233-4431 <a href="mailto:emeraldangel2011@hotmail.com">emeraldangel2011@hotmail.com</a> 231-225-8614 <a href="mailto:snhalloran1@yahoo.com">snhalloran1@yahoo.com</a> 517-881-7222
EDUCATION EXHIBITS	Chair	Bee Capper	<a href="mailto:beenoel46@gmail.com">beenoel46@gmail.com</a> 231-233-9371
YOUTH and SPONSORED GROUP (Entries, Classification, and Placement)	Co-Chairs	Jean Capper Martha Capper Vickie Johnson	<a href="mailto:jmcmom@aol.com">jmcmom@aol.com</a> 773-497-5766 <a href="mailto:mgcski@aol.com">mgcski@aol.com</a> 612-747-3974 <a href="mailto:maxjax246@comcast.net">maxjax246@comcast.net</a> 517-803-7429
BOTANICAL ARTS (Entries, Classification, and Placement)	Co-Chairs	Jeneanne Fitzgerald Pat Pomaranski Dorothy Sandoval	<a href="mailto:jeneanefitz@sbcglobal.net">jeneanefitz@sbcglobal.net</a> 231-889-0179 <a href="mailto:patpomaranski@gmail.com">patpomaranski@gmail.com</a> 616-218-9075 <a href="mailto:bnds@att.net">bnds@att.net</a> 417-616-1841
JUDGES	Chair	Mary Jo McElroy	<a href="mailto:maryjomcelroy@sbcglobal.net">maryjomcelroy@sbcglobal.net</a> 614-325-1717
CLERKS	Chair	Leann Burger	<a href="mailto:leannburger@sbcglobal.net">leannburger@sbcglobal.net</a> 231-970-0909
AWARDS and BOOK OF EVIDENCE	Chair	Mary Jo McElroy	<a href="mailto:maryjomcelroy@sbcglobal.net">maryjomcelroy@sbcglobal.net</a> 614-325-1717
PUBLICITY	Chair	Elaine Maylen	<a href="mailto:emaylen@me.com">emaylen@me.com</a> 248-515-9332
SHOW PHOTOGRAPHY	Photographer	Susan Morris	<a href="mailto:mamamorris834@gmail.com">mamamorris834@gmail.com</a> 231-608-3996
FINANCE	Treasurer	Ellen Kendall	<a href="mailto:ellenkendall40@gmail.com">ellenkendall40@gmail.com</a> 248-321-5120

## FLOWER SHOW TIME SCHEDULE

Event	Day	Date	Time
Pick up staging panels and frames (Design Section C: classes 7, 8, and 9)	To be arranged with Show Chair		
Deadline to pre-register Horticulture Sections G, K and L (container-grown plants and collections); Design; Botanical Arts Design, Artistic Crafts, and Photography entries	Thursday	August 14, 2025	By 5 PM
Committee set-up and staging	Thursday	September 11, 2025	9 AM to 1 PM
All entries arrival and placement. EXCEPTION for accredited and student judges or as approved by Show Chair	Thursday	September 11, 2025	1 PM to 7 PM
Late entries for accredited and student judges or as approved by Show Chair	Friday	September 12, 2025	7 AM to 8:30 AM
Judging	Friday	September 12, 2025	9 AM to 12 N
Flower Show opens to meeting participants	Friday	September 12, 2025	12 N
Flower Show open to the public	Friday	September 12, 2025	2:30 to 5 PM
	Saturday	September 13, 2025	9 AM to 1 PM
All exhibits removed	Saturday	September 13, 2025	1 PM to 3 PM

### GENERAL RULES FOR EXHIBITORS – ALL DIVISIONS

1. The reader is advised to peruse this first and follow the rules – it is the 'law' of the show.
2. This Flower Show conforms to the standards established by National Garden Clubs, Inc. (NGC), *Handbook for Flower Shows*, 2017 Edition, with revisions published annually at [gardenclub.org](http://gardenclub.org); most recent update July 2024. The *Handbook* shall be used as the authority in all issues not covered in this Schedule. Hereafter in this Schedule, this reference shall be referred to as *Handbook* for simplicity.
3. An online copy of this Schedule is available to club members and the public at <https://portagelakegardenclub.org>.
4. All exhibitors must comply with the following:

- a. Must be an amateur grower if exhibiting in the Horticulture Division. Must be a child between 6 and 18 years of age if exhibiting in the Youth Section. Must be a member of Manistee Senior Center if exhibiting in the Sponsored Group Section. Must be an amateur photographer if exhibiting in the Botanical Arts Photography Section.
- b. Must be a member of a garden club that is a member of Michigan Garden Clubs, Inc. if exhibiting in the Design Division, Education Division, or Botanical Arts Design or Artistic Crafts Sections.
- c. **Each exhibitor is limited to one entry per class, except in the Horticulture Division.**
- d. Must use plant material as specified in this Schedule's Divisions, Sections, and Classes, i.e., either fresh, dried, or a combination of both as required by the Class. **There must be an emphasis on fresh plant material. No artificial plant material is permitted in any exhibit in any division.**
- e. Must pre-register entries for Division I Horticulture Sections G, K, and L (container-grown plants and collections), Division II Design, and Division V Botanical Arts Design, Artistic Crafts and Photography by 5 PM on Thursday, August 14, 2025 (see pages 38-39 for Entry Tag Completion Instructions). This is important to ensure there is adequate space for all exhibits and that commitments for exhibits are confirmed.
- f. Staging panels and wooden frames which will be used by designers will be available by contacting the Show General Chair (see page 4) who will arrange for pick-up or delivery.
- g. A supply of entry cards will be given to Presidents of MGC District 5 garden clubs. Additional entry cards may be obtained by contacting the Show General Chair (see page 4).
- h. Entry cards should be filled out in advance using the instructions on pages 38-39. It is advisable to use pencil or waterproof ink only.
- i. All entries will be received at Wagoner Community Center / Manistee Senior Center between 1 PM and 7 PM on Thursday, September 11, 2025. No entries will be received at any other time. **EXCEPTION:** Accredited Judges and Student Judges, or AS APPROVED BY SHOW GENERAL CHAIR, may bring entries on September 12 between 7 AM and 8:30 AM.
- j. Participants must register at the Entries / Placement Committee table to obtain directions for placement **before** exhibits are placed in designated locations. Horticulture Placement committee members will place all Horticulture exhibits.

- k. **The Classification Chairs for each Division will check exhibits for conformity to the Schedule prior to judging. Final determination for conformance is the judges' responsibility.**
  - l. Must have all entries in all categories ready for judging by 8:45 AM on Friday, September 12. Judging will begin promptly after the 9 AM briefing.
  - m. **The General Chair and the Classification Chairs for each Division are available during judging for consultation. They, along with the Judges and Clerks, are the only personnel allowed on the floor during judging.**
  - n. **The decisions of judges are final. Awards may be withheld if not merited.**
5. Photographs may be taken between 12 N and 5 PM on Friday, September 12 or between 9 AM and 1 PM on Saturday, September 13. **No** photographs may be taken during judging.
  6. **The Flower Show Committee will strive to assure the safety of all items after arrival and placement; however, the Committee will not be responsible for any loss or damage to exhibits.**
  7. The Flower Show will be open to the public from 2:30 to 5 PM on Friday, September 12 and from 9 AM to 1 PM on Saturday, September 13.
  8. All exhibits must be removed no later than 3 PM on Saturday, September 13, but no exhibits may be removed before 1 PM on September 13. Entrants unable to remove exhibits during this time **must** arrange to have them removed. All Exhibitors and Committee Members are encouraged to assume responsibility for cleaning their area and the venue at the end of the show.
  9. Some plants are protected Michigan native plants. Refer to list of permitted plants on pages 36-37 of this Schedule.

## **FLOWER SHOW PREPARATION**

1. **The Flower Show Schedule must be followed precisely as written. It is the law of the show.**
2. The Committee advises that exhibitors condition all live plant material:
  - a. In late afternoon or the evening before the show, cut specimens on a slant with a sharp knife or clippers. For thick heavy stems, crush the lower two inches if they are fleshy and green. If stems are woody (such as arboreal), give the stem numerous vertical clips.
  - b. After cutting, immediately put specimens in a bucket of tepid water; do not crowd them. Place in a cool, dark, draft-free location overnight. There may be exceptions to this. Please see conditioning and preparation suggestions for specific plants in Chapter 6 of the *Handbook*, pages 55-56.

- c. Leave foliage on the stem since it is needed to judge the health of the specimen.
  - d. After conditioning plant material overnight, re-cut stems under water just before entering specimen in the Flower Show.
  - e. Products used to retain moisture by reducing water loss e.g., Floralife® Clear Crowning Glory Solution are permitted.
3. Care for and groom specimens:
- a. Start early to give your plants tender loving care: feeding, watering, and turning to the source of light to promote a balanced shape, equal growth, etc.
  - b. Clean and shape cut specimens and potted plants. Remove any dirt, dust, or residue with mild soapy water. Rinse well and dry. Remove broken, yellowed, insect-damaged or spent leaves and blossoms.
  - c. Center single houseplants in their container.
  - d. For additional information, please consult the *Handbook*, or, if questions remain, contact one of the club members listed as a Flower Show Consultant on page 4 of this Schedule.

## **JUDGING and AWARDING OF RIBBONS – ALL DIVISIONS**

Judging will adhere to these guidelines:

1. National Garden Club, Inc. judges (three panels, three judges per panel) will begin judging promptly after a 9 AM briefing on Friday, September 12. Judging will conclude by 12 Noon. Photography judges will be three recognized photography experts (e.g., camera club judges, photography instructors, professional photographers, or qualified photography judges).
2. All judges (except for photography) must be NGC accredited. All judges will **use the NGC Standard System of Awarding** with awards given at the discretion of the accredited judges in all classes.
3. Exhibitors may not discuss exhibits with the judges.

Entries must be judged by the “NGC Standard System of Awarding” for all competitive judging. Refer to the *Handbook*, Chapter 5 Awards, pages 39-48. Ribbons may be offered, but withheld, if exhibit/s do not meet the point value for the ribbon.

- Only one first place (blue) ribbon per class or sub-class; must score 90 or more.
- Only one second place (red) ribbon per class or sub-class; must score 85 or more.
- Only one third place (yellow) ribbon per class or sub-class; must score 80 or more.



- One or more honorable mention (white) ribbons, as merited; must score 75 or more.

## **NGC TOP EXHIBITOR AWARDS**

All requirements for NGC Top Exhibitor Awards as listed in the *Handbook*, Chapter 5 Awards must be met (pages 39-48). Minimum number of classes and exhibits can be found in the *Handbook*. The exhibit must be a blue-ribbon winner scoring 95 or more (youth 90+) and must meet the special requirements for each award. The following awards will be offered.

### **DIVISION I HORTICULTURE DIVISION TOP EXHIBITOR AWARDS**

One **AWARD OF HORTICULTURAL EXCELLENCE** (*Handbook*, pages 40 and 46). This Division award is offered to the highest scoring 95+ blue ribbon winner and correctly named exhibit in the entire Horticulture Division. Rosette of green, orange, and blue ribbons will be given.

Up to seven, one award per Section, for an **AWARD OF MERIT** (*Handbook*, pages 41 and 46). This Section award is offered to the highest scoring 95+ blue ribbon winner and correctly named exhibit for cut non-woody specimens including vines in Sections A, B, C, D, E, F, or I. Rosette of orange ribbons will be given.

Two, one award per Section, for an **ARBOREAL AWARD** (*Handbook*, pages 40-41 and 46). This Section award is offered to the highest scoring 95+ blue ribbon winner and correctly named exhibit for cut trees / shrubs in Sections H and J. Rosette of green ribbons will be given.

Two, one award per Section, for a **GROWER'S CHOICE AWARD** (*Handbook*, pages 41 and 46). This Section award is offered to the highest scoring 95+ blue ribbon winner and correctly named exhibit for container-grown plants in Sections G or K. Rosette of dark green ribbons will be given.

One **COLLECTOR'S SHOWCASE AWARD** (*Handbook*, pages 41 and 46). This Section award is offered to the highest scoring 95+ blue ribbon winner and correctly named exhibit for a Collection in Section L. Rosette of brown and green ribbons will be given.

### **DIVISION II DESIGN DIVISION TOP EXHIBITOR AWARDS**

One **AWARD OF DESIGN EXCELLENCE** (*Handbook*, pages 42 and 46). This Division award is offered to the highest scoring 95+ blue ribbon exhibit in Classes 1 - 10. Rosette of gold ribbons will be given.

One **TABLE ARTISTRY AWARD** (*Handbook*, pages 43 and 47). This Section award is offered to the highest scoring 95+ blue ribbon exhibit in Section A, Classes 1 - 3. Rosette of burgundy ribbons will be given.

One **PETITE AWARD** (*Handbook*, pages 43 and 47). This Section award is offered to the highest scoring 95+ blue ribbon exhibit in Section B, Classes 4 - 6. Rosette of light blue and white ribbons will be given.

One **DESIGNER'S CHOICE AWARD** (*Handbook*, pages 42 and 47). This Section award is offered to the highest scoring 95+ blue ribbon exhibit in Section C, Classes 7 - 10. Rosette of purple ribbons will be given.

### **DIVISION III EDUCATION AWARDS**

One **EDUCATIONAL TOP EXHIBITOR AWARD** (*Handbook*, pages 43-44 and 47). This Division award is offered to the highest scoring 95+ Education exhibit. Rosette of brown and white ribbons will be given.

### **DIVISION IV YOUTH AWARDS**

Up to three **YOUTH TOP EXHIBITOR AWARD** (*Handbook*, pages 44 and 47). This award is offered to the highest scoring 90+ Youth exhibit in each of the three age groups. Rosette of red/white/blue ribbons will be given.

### **DIVISION V BOTANICAL ARTS AWARDS**

One **BOTANICAL ARTS DESIGN AWARD** (*Handbook*, pages 44 and 47). This Section award is offered to the highest scoring 95+ Botanical Arts Design exhibit. Rosette of yellow and orange ribbons will be given.

One **BOTANICAL ARTS ARTISTIC CRAFTS AWARD** (*Handbook*, pages 44 and 47). This Section award is offered to the highest scoring 95+ Botanical Arts Artistic Crafts Exhibit. Rosette of navy-blue ribbons will be given.

One **BOTANICAL ARTS PHOTOGRAPHY TOP AWARD** (*Handbook*, pages 45 and 47). This Section award is offered to the highest scoring 95+ Botanical Arts Photography exhibit. Rosette of black and white ribbons will be given.

### **SWEEPSTAKES AWARD**

Up to four recipients for a **SWEEPSTAKES AWARD** (*Handbook*, pages 46 and 48). These awards are offered to the exhibitor with the most blue ribbons in each of the Horticulture Division, Design Division, Botanical Arts Division, and Overall Flower Show. Rosette of green and white ribbons will be given.

### **PEOPLE'S CHOICE AWARD**

Attendees may vote for their favorite entry in the following Divisions / Sections: Design or Botanical Arts Design or Botanical Arts Artistic Crafts. Rosette of yellow ribbons will be given.

## DIVISION I HORTICULTURE: **Mi green thumb**



### HORTICULTURE RULES

1. The reader is advised to carefully review all General Rules, pages 5-7, as prerequisite for this part of the Schedule.
2. All classes are open to amateur gardeners. No commercial exhibitors are allowed in competition. Any member of the public may enter this Division.
3. **The NGC Exhibit Policies are printed in the *Handbook*, Chapter 6, Exhibiting in the Horticulture Division, pages 55-61. The rules for a single species cut or container-grown specimen are listed in the *Handbook* or its supplement *Horticulture Exhibiting and Judging*.**
4. **To receive an NGC Top Exhibitor Award, the exhibitor must identify the entry by its binomial name or currently acceptable scientific designation.** All entries must be correctly labeled on entry cards with proper botanical names (*Genus* and *specific epithet*) and variety / cultivar names when known. Common name may be added if desired. ***Entry cards are to be filled out in advance (see pages 38-39 for Entry Tag Completion Instructions and Samples).***

5. All entries **must** be checked by the Classification Committee and each entry tag must include the exhibitor's name, complete address, and club name (if a member). A member of the Classification Committee must place all entries.
6. Exhibitor may request more than one entry per class, if every entry is a different species, variety, cultivar, type, or color.
7. All exhibits must be kept fresh and in good condition. (See Flower Show Preparation pages 7-8).
8. The following **must** be adhered to:
  - a. All plant material must be fresh and have been grown by the exhibitor.
  - b. Cut annuals must have been in exhibitor's possession from seeds, cuttings, or immature plants not less than 90 days [exception: no minimum for early maturing seeds and/or transplants]; perennials for at least 90 days; bulbs blooms for 90 days.
  - c. Container-grown plants must have been in exhibitor's possession for at least 90 days. Multiple and combination plantings must have been grown together and in exhibitor's possession at least six weeks. Containers for potted plants should be clean and attractive, i.e., free of dirt, smudges, moss, and salt. Double potting is permitted, when applicable, to enhance the plant's appearance. Containers and container-grown plants are restricted to the sizes described in each Section and a maximum weight of twenty pounds.
  - d. Cut specimen containers (clear glass bottles or vases) will be furnished by Portage Lake Garden Club, Inc. at the time the plant material is delivered [exception is Section L]. If an exhibitor errs and uses his/her own container, that container becomes the property of Portage Lake Garden Club.
  - e. **Cut specimens should not have any foliage below the water line, except for *Gladiolus*.** Other foliage should be left on the stem as it is needed to judge the health of the specimen.
  - f. **If a plant is considered a flowering plant, it should be exhibited as a flowering specimen. Foliage plants may flower but should be exhibited as foliage plant if grown for their leaves.**
  - g. **Specimens with a class designation in the Schedule may not be entered in the "any other worthy" class.**
  - h. Fresh plant material may not be altered by the application of oil, commercial "shine" products, etc. that may artificially change the natural color and texture. Plant should be clean and free of dust, dirt, spent blossoms, and broken, yellowed, insect-damaged leaves. However, products used to retain moisture by reducing water loss e.g., Floralife® Clear Crowning Glory Solution are permitted.

- i. Wedging (using a small, inconspicuous “plug” in neck of container to improve pose of specimen) is permitted. The Committee will furnish bubble wrap for wedging material as appropriate.
- 9. **The Horticulture Classification Chair and/or General Show Chair are free to subdivide classes by color, form, size, cultivar, variety, or other distinguishing characteristics.**
- 10. **Point scoring for all DIVISION I HORTICULTURE Classes is judged according to the *Handbook*, Chapter 14, Scales of Points, page 129.**

## HORTICULTURE SCALE OF POINTS

<b>All Cut or Container-Grown Horticulture Specimens and Collections</b> (Arboreal, Flowering, Foliage, Fruit/Vegetable/Nuts)	
Criteria	Points
<b>Conformance</b>	5
<b>Plant Identification</b>	5
<b>Peak of Perfection</b>	
Form	20
Color	20
Maturity / Size	20
Condition / Blemishes	15
<b>Grooming / Staging</b>	
Grooming	10
Staging	5
<b>TOTAL</b>	100

## HORTICULTURE SECTIONS and CLASSES

All classes are eligible for the Award of Horticultural Excellence.

### SECTION A: FLOWERING ANNUALS Mi seasonal friends

**Single cut specimen, one stem, unless stated otherwise. Exhibited in a clear, transparent container with water and unobtrusive wedging as needed. Container and wedging supplied by Committee. Eligible for Award of Merit.**

- Class 1      *Antirrhinum majus* (snapdragon)
- Class 2      *Celosia cristata* (cockscomb)
- Class 3      *Cosmos bipinnatus* (common cosmos)
- Class 4      *Helianthus annus* (sunflower)
- Class 5      *Pelargonium* (geranium)
- Class 6      *Senecio cineraria* (dusty miller)

- Class 7 *Tagetes* (marigold)
- Class 8 *Zinnia* (zinnia)
- Class 9 Any other worthy botanically named flowering annual

## SECTION B: FLOWERING PERENNIALS

## Mi old faithful's

**Single cut specimen, one stem or spray, of an herbaceous perennial, unless stated otherwise. Exhibited in a clear, transparent container with water and unobtrusive wedging as needed. Container and wedging supplied by Committee. Eligible for Award of Merit.**

- Class 10 *Achillea millefolium* (yarrow)
- Class 11 *Anemone x hybrida* (Japanese anemone)
- Class 12 *Aster* (any varietal aster)
- Class 13 *Campanula* (bellflower)
- Class 14 *Chrysanthemum x morifolium* (mum, garden mum)
- Class 15 *Echinacea* (coneflower)
- Class 16 *Eutrochium purpureum* or *Eupatorium maculatum* (sweet joe pye weed or spotted joe pye weed)
- Class 17 *Gaillardia* spp (blanket flower)
- Class 18 *Perovskia atriplicifolia* (Russian sage)
- Class 19 *Phlox paniculata* (garden phlox)
- Class 20 *Rudbeckia* (black-eyed susan)
- Class 21 *Solidago* (goldenrod)
- Class 22 Any other worthy botanically named flowering perennial

## SECTION C: TUBERS, RHIZOMES, BULBS and CORMS

## Mi hidden treasures

**Single cut specimen, one stem, of a plant grown from a tuber, rhizome, bulb, or corm. Exhibited in a clear, transparent container with water and unobtrusive wedging as needed. Container and wedging supplied by Committee. Eligible for Award of Merit.**

- Class 23 *Canna x generalis* (canna lily)
- Class 24 *Dahlia* (any dahlia)
  - a. Anemone form
  - b. Ball form
  - c. Cactus or semi cactus or incurved cactus form
  - d. Formal decorative form
  - e. Informal decorative form
  - f. Laciniated form
  - g. Miniature ball form
  - h. Mignon or single or collarette or peony form
  - i. Orchid or orchette form
  - j. Pompon form
  - k. Stellar form
  - l. Waterlily form

- m. Any other dahlia form
- Class 25 *Zantedeschia aethiopica* (calla lily)
- Class 26 Any other worthy botanically named tuber, rhizome, bulb, or corm

## SECTION D: ROSES **Mi perfect one**

**Single cut specimen, one bloom on stem or cluster of three to five blooms, unless stated otherwise. Exhibited in a clear, transparent container with water and unobtrusive wedging as needed. Container and wedging supplied by Committee. Eligible for Award of Merit.**

- Class 27 *Rosa* (climbing rose)
- Class 28 *Rosa* (floribunda rose)
- Class 29 *Rosa* (grandiflora rose)
- Class 30 *Rosa* (hybrid tea rose)
- Class 31 *Rosa* (miniature rose)
- Class 32 *Rosa* (shrub or landscape rose)
- Class 33 Any other worthy botanically named rose

## SECTION E: HERBS **Mi garden-to-table**

**Single-cut specimen, one stem, unless stated otherwise. Exhibited in a clear, transparent container with water and unobtrusive wedging as needed. Container and wedging supplied by Committee. Eligible for Award of Merit.**

- Class 34 *Anethum graveolens* (dill)
- Class 35 *Lavandula* (lavender)
- Class 36 *Mentha* (mint)
- Class 37 *Ocimum basilicum* (basil)
- Class 38 *Origanum* (oregano)
- Class 39 *Petroselinum crispum* var. *neapolitanum* (Italian parsley)
- Class 40 *Salvia rosmarinus* (rosemary)
- Class 41 *Thymus vulgaris* (thyme)
- Class 42 Any other worthy botanically named herb

## SECTION F: FRUITS & VEGETABLES **Mi bounty**

**Exhibit of three cut specimens unless stated otherwise. Exhibited on a plain white paper plate supplied by Committee. Eligible for Award of Merit.**

- Class 43 *Allium sativum* (garlic) – group of 5 bulbs with trimmed stem/roots
- Class 44 *Beta vulgaris* (beet)
- Class 45 *Capsicum annuum* (bell pepper)
- Class 46 *Cucurbita* (summer squash)
- Class 47 *Cucurbita* (winter squash)

- Class 48 *Daucus carota* (carrot)
- Class 49 *Malus domestica* (apple)
- Class 50 *Phaseolus vulgaris* (common bush bean)
- Class 51 *Pyrus* (pear)
- Class 52 *Solanum lycopersicum* (tomato)
- Class 53 *Solanum tuberosum* (potato)
- Class 54 Any other worthy botanically named fruit or vegetable

## SECTION G: CONTAINER-GROWN PLANTS

### Mi portable beauties

**Single genus container-grown plants must be in a clean container and may be double potted. A saucer is required if water leakage is possible. Containers should be in proportion to the size of the plant. Entries are restricted to a size specification noted below. Maximum weight of 20 pounds. Eligible for Grower's Choice Award. **These exhibits must be pre-registered by 5 p.m. on August 14 to allow for sufficient space.****

- Class 55 Flowering container-grown plant. Pot diameter 8" and under
- Class 56 Flowering container-grown plant. Pot diameter 8.01" and over
- Class 57 Foliage container-grown plant. Pot diameter 8" and under
- Class 58 Foliage container-grown plant. Pot diameter 8.01" and over
- Class 59 Succulent container-grown plant. Pot diameter up to 12"
- Class 60 Cactus container-grown plant. Pot diameter up to 12"

## SECTION H. CONIFER BRANCHES

### Mi forever green

**Single cut specimen, stem or spray. Specimen must be no more than 30" in length, must include an apical tip, central leader, and several nodes. Exhibited on a table covered with black tablecloth or hanging on lattice work depending on size. Eligible for Arboreal Award.**

- Class 61 *Buxus* (boxwood)
- Class 62 *Juniperus* (juniper)
- Class 63 *Metasequoia glyptostroboides* (dawn redwood)
- Class 64 *Picea* (spruce)
- Class 65 *Pinus* (pine)
- Class 66 *Taxus* (yew)
- Class 67 *Thuja occidentalis* (American arborvitae, Eastern or American cedar)
- Class 68 Any other worthy botanically named conifer



## SECTION I. ORNAMENTAL GRASSES **Mi flowing flora**

**Exhibit of three cut specimens unless stated otherwise. Specimens must be no more than 36" in length including seedhead; seedhead may appear dried but stem must be green. Exhibited in a clear, transparent container with water and unobtrusive wedging as needed. Container and wedging supplied by Committee. Eligible for Award of Merit.**

- Class 69 *Calamagrostis* (feather reed grass)
- Class 70 *Hakonechloa macra* (Japanese forest grass)
- Class 71 *Miscanthus sinensis* (maiden grass)
- Class 72 *Pennisetum* (fountain grass)
- Class 73 Any other worthy botanically named ornamental grass

## SECTION J. WOODY SHRUBS **Wood you be Mi-ne?**

**Single cut flowering or non-flowering specimen. Exhibited in a clear, transparent container with water and unobtrusive wedging as needed. Container and wedging supplied by Committee. Eligible for Arboreal Award.**

- Class 74 *Buddleia* (butterfly bush)
- Class 75 *Hydrangea arborescens* (hydrangea)
- Class 76 *Hydrangea paniculata* (hydrangea)
- Class 77 *Ilex* (holly)
- Class 78 *Physocarpus* (ninebark)
- Class 79 *Viburnum*
- Class 80 Any other worthy botanically named woody shrub

## SECTION K: CONTAINER-GROWN COMBINATION PLANTERS

### **Mi cozy neighbors**

**Combination plantings must have been in exhibitor's possession for at least 6 weeks. Double potting is permitted as long as a 10-inch limit at the base is maintained; the inner pot must not be visible. A saucer is required if water leakage is possible. Only naturalistic accessories are permitted but must be in scale with plantings and container and theme appropriate to the plants. A 3x5 card listing all plant material must be submitted with the entry card. The binomial name or currently acceptable scientific designation is required for each plant. Eligible for Grower's Choice Award. **These must be pre-registered no later than 5 PM on August 14 to allow for sufficient space.****

- Class 81 Planter of mixed genera flowering plants. A grouping of three or more botanically different flowering plants with similar cultural requirements. A non-flowering foliage plant may be included but flowering plants must dominate.

- Class 82 Planter of mixed genera non-flowering plants. A grouping of three or more botanically different non-flowering plants with similar cultural requirements.
- Class 83 Planter of mixed succulents. A grouping of three or more botanically different succulents with similar cultural requirements.
- Class 84 Planter of mixed herbs. A grouping of three or more botanically different herbs with similar cultural requirements.

## **SECTION L. COLLECTION** **Mi high-five**

**Minimum of 5 cut specimens each labeled with correct binomial name or currently acceptable scientific designation. Exhibitor must provide transparent (clear) containers appropriate to cut specimens and place the collection/s on a table top covered in black in a space approximately 15" square. Exhibitor is not required to use all the allotted space. Exhibitor may use staging to enhance specimens, but staging is not an integral part of the collection. A 3x5 card clearly identifying each specimen must be submitted with the entry card. Eligible for Collector's Showcase Award. **These exhibits must be pre-registered by 5 p.m. on August 14 to allow for sufficient space.****

- Class 85 Herbs
- Class 86 Heuchera
- Class 87 Hosta
- Class 88 Solenostemon scutellarioides or Plectranthus scutellarioides (coleus)
- Class 89 Dahlia
- Class 90. Any other worthy botanically named collection

## DIVISION II DESIGN: Mi habitats



### DESIGN RULES

1. The reader is advised to carefully review all General Rules, pages 5-7, as prerequisite for this part of the Schedule.
2. The designer has the freedom to choose Traditional or Creative style with any design listed unless restricted by the schedule. **The exhibitor is required to conform to the stated description and limitations of the design type if named in the class.**
3. **The NGC Exhibit Policies are printed in the *Handbook*, Chapter 7, Design, Exhibiting in the Design Division, NGC Policies and Guidelines, pages 79-81. Rules for Design Types, Advanced Design Types, Table Designs and Table Appointments are printed in the *Handbook*, Chapter 7, Design.**
4. The following **must** be adhered to:
  - a. Each class requires four (4) entries.

- b. Exhibits may be submitted by anyone who is a member of a garden club associated with Michigan Garden Clubs, Inc.
  - c. An exhibitor may enter as many classes as desired, but only one exhibit per class.
  - d. A design must be the work of only one exhibitor and that exhibitor's name must appear on the entry card. Entry cards must be completed in advance. **All plant material used in the design must be identified on a card provided by the exhibitor and included with the entry tag.** [See pages 38-39 for Entry Tag Completion Instructions and Samples.]
  - e. Designer is on his/her honor that the design being entered has not been previously entered or previously judged in an NGC Flower Show.
  - f. Every Design entry must include plant material, fresh or dried, as specified in this Schedule. Plant material need not have been grown by exhibitor.
  - g. Plant material and non-plant material permitted and not permitted in the Design Division are printed in the *Handbook*, Chapter 7 Design, pages 80-81.**
  - h. Fresh plant material may not be treated in any manner. Plant material that has been treated to alter its exterior appearance may be used only in its dried state.
  - i. No artificial plant material e.g., flowers, foliage, fruits, vegetables, etc. are permitted.
  - j. American and other national flags may not be incorporated into any competitive designs, nor be used as underlays, swags, or the like.
  - k. Landscapes or scenes are not permitted.
5. The following are permitted unless prohibited by the Schedule, law, or specific requirements of a *Design Top Exhibitor Award*:
- a. Accessory objects and featured objects;
  - b. Fresh plant material or other components may be manipulated per floral design techniques in the *Handbook*, pages 81-83;
  - c. Cut fruits or vegetables sealed to discourage insects, odors, discoloration. Any non-perishable food product is also allowed, but must be sealed if the possibility exists for attracting insects or producing an undesirable odor;
  - d. Objects which add interest when tastefully used, e.g., feathers, antlers, coral, horns, starfish, sponges, sea fans, shells, nests, manufactured or crafted simulations of birds or animals;
  - e. All staging properties, such as staging panels, frames, pedestals, columns, boxes, cubes, underlays, etc. which may be incorporated into designs;

- f. Living plants with roots attached, e.g., moss, Bromeliaceae family members or container-grown specimens.
- 6. Advance registration is required in all Design classes. Registration *must* be received no later than 5 p.m. on Thursday, August 14, 2025 by the Design Chair.**
7. If the designer is unable to fulfill the assignment, it is the responsibility of the designer to provide a substitute and advise the Design Chair.
8. A 3" x 5" card naming all plant material used in the design *must* accompany each exhibit along with the entry tag; card may include a brief explanation of the design.
- 9. Point scoring for all DIVISION II DESIGN Classes is judged according to the *Handbook*, Chapter 14, Design Scales of Points, page 130.**

### DESIGN SCALE OF POINTS

All Designs	
Criteria	Points
<b>Conformance</b>	
To Type	7
To Schedule Requirements	7
<b>Design Principles</b>	48
<b>Selection of Components</b>	8
<b>Organization of Components</b>	8
<b>Expression</b>	8
<b>Distinction</b>	14
<b>TOTAL</b>	100

## DESIGN SECTIONS and CLASSES

### SECTION A: TABLE DESIGNS **Mi home and harvest**

All classes permit designer's choice of fresh, dried, and/or treated dried plant material. Designs are eligible for the Table Artistry Award (*Handbook*, page 43). Four entries in each Class. Contact Pam Tompke for assistance as a Consultant (see page 4).

#### Class 1: **Bounty from Mi fields**

A buffet table with service for four. Components are conveniently and logically placed for ease of self-service. At least one serving piece and a decorative unit (floral design) must be included. A rectangular 5' long by 18" wide table, 28" in height from the floor, is provided by the Committee for each exhibit. Table covering to be provided by the designer.

### Class 2: **Along Mi waterways**

Al fresco (outdoor) dining for two. A functional table design with any degree of formality to include a decorative unit (floral design). A square 36" table, 28" in height from the floor, is provided by the Committee for each exhibit. Table covering to be provided by the designer.

### Class 3: **Mi gardens and orchards**

An exhibition table design, not meant to be functional but created to suggest the service of food with no requirements as to the type or number of table appointments. Plant material may be placed where needed without being restricted to a container. Designer is allotted maximum space 30" deep by 36" wide for each design; height of design to be determined by exhibitor. Designer must provide an underlay of their choice, not to exceed the designated footprint of 30" by 36". Exhibits will be placed on a table covered with a black tablecloth provided by the Committee. Staged in front of a neutral (white / tan) painted wall.

## **SECTION B: PETITE DESIGNS Mi feathered friends**

All classes permit designer's choice of fresh, dried, and/or treated dried plant material. Designer to provide appropriate size underlay; underlay can be no larger than the stated size of the design. Designs will be displayed on a black pedestal, divided into quarters by black support foam core. Each design will be placed within a space 11" by 11" square and 14" in height. Designs are eligible for the Petite Award (*Handbook*, page 43). Four entries in each Class. Contact Jaye Barends for assistance as a Consultant (see page 4).

### Class 4: **Ruby throated**

A reflective design, a creative design containing reflective materials giving back images of light to the viewer. No more than 3" by 3" by 3" in height, depth, and width. The designer will furnish an underlay which can be no larger than the stated size of the design.

### Class 5: **Woody Woodpecker**

A designer's choice of type and plant material, no more than 6" by 6" by 6" in height, depth, and width. The designer will furnish an underlay which can be no larger than the stated size of the design.

## Class 6: **Swan Lake**

An illuminary design, a creative design incorporating lights for special effect. The lighting must be an integral part of the design and its effect readily apparent. Lighting must be battery operated. No more than 8" by 8" by 8" in height, depth, and width. The designer will furnish an underlay which can be no larger than the stated size of the design.

## **SECTION C: DESIGN ARTISTRY** **Mi furry friends**

All classes permit designer's choice of fresh, dried, and/or treated dried plant material. Exhibitors to provide appropriately sized underlay as specified below. Designs are eligible for the Designer's Choice Award (Handbook, page 42). Four entries in each Class. Contact Susan Halloran for assistance as a Consultant (see page 4).

## Class 7: **Who gives a hoot?**

An illuminary design, a creative design incorporating lights for special effect. The lighting must be an integral part of the design and its effect readily apparent. Lighting must be battery operated. Exhibit will be displayed on a section of a table in front of a staging panel. Dimensions of staging panel are 30" wide by 40" in height (vertical orientation). Exhibitor may cover staging panel as desired. Exhibitor to supply underlay 30" wide by 24" deep. Design will be staged on a table covered with black tablecloth. Uncovered staging panel, table, and black tablecloth supplied by the Committee.

## Class 8: **Nuts about Mi**

A still life design, a traditional or creative non-abstract grouping of functional and realistic objects and plant material with a theme. Objects are more dominant and more important to the theme than plant material. Plant material may or may not represent a floral design. Exhibit will be displayed on a section of a table in front of a staging panel. Dimensions of staging panel are 40" wide by 30" in height (horizontal orientation). Exhibitor may cover staging panel as desired. Exhibitor to supply underlay 40" wide by 24" deep. Design will be staged on a table covered with black tablecloth. Uncovered staging panel, table, and black tablecloth supplied by the Committee.

## Class 9: **Hang in there, possum**

A framed spatial design, a creative design organized as a single unit suspended in a frame or frame-like structure. No actual movement is permitted, but movement is implied. Black painted frame is 20" wide by 30" in height by 3" deep and will be vertically upright on a table. Design may exceed the depth of frame. Design will be staged on a table covered with black tablecloth in an open space, allowing design to be viewed from all sides. Frame, table, and black tablecloth supplied by the Committee.

## Class 10: **Pepe Le Pew**

Designer's choice of a line or line mass. Open to exhibitors who have never won a blue ribbon in a design class. Exhibit will be staged on a black pedestal with a top surface 18.5" by 18.5" square. Pedestal top is 37" from the floor. Exhibitor to supply underlay, not to exceed 18" by 18". Pedestals will be staged in an open space, allowing design to be viewed from all sides. Pedestal supplied by the Committee.



**DIVISION III EDUCATION:**  
**Mi Education is BlooMing**



**EDUCATION RULES**

1. The reader is advised to carefully review all General Rules, pages 5-7, as prerequisite for this part of the Schedule.
2. **Education exhibits may be the work of more than one individual or organization unless a Student Judge or an Accredited Judge is seeking exhibiting credit for preparing an education exhibit.**
3. **An exhibit must occupy a minimum of eighteen (18) square feet surface area.**
4. Exhibits in this Division must focus on educational value, must emphasize NGC goals and objectives, and are competitive.
  - a. Exhibit must convey educational facts quickly and forcefully in an interesting manner without excessive reading material. Posted printed material should be large enough to read from three (3) feet.

- b. Organization of components must be carefully planned to lead viewer’s eyes logically through the exhibit. Exhibits should be unique, dramatic, colorful, and easy-to-read. Exhibits should include features that attract the viewer and hold one’s attention. This could be accomplished by using a catchy title, motion, pleasing sound, special lighting. unexpected color combination, innovative staging, or by using a bit of humor or whimsy.
  - c. Handout materials may add to the educational value but are not required.
  - d. Incorporating some fresh plant material is encouraged but not required. However, artificial plant material may not be included in the exhibit.
5. For information related to Education exhibits, please refer to the *Handbook*, Chapter 8, Education Division, pages 85-86.
- 6. Point scoring for DIVISION III EDUCATION is judged according to the *Handbook*, Chapter 14, Scales of Points, Educational Exhibits, page 130.**

**EDUCATION SCALE OF POINTS**

<b>Educational Exhibits</b>	
<b>Criteria</b>	<b>Points</b>
<b>Educational Value</b>	
Interest to Viewer	25
Clear, concise presentation	15
Adequate signage	10
Conforms to NGC Objectives	10
<b>Staging</b>	
Craftsmanship / Technique	10
Distinction	10
<b>Creativity and Expression</b>	
<b>TOTAL SCORE</b>	
<b>100</b>	

## **EDUCATION EXHIBITS**

### **SECTION A. Mi natural treasures**

A table 30" deep x 96" long, covered with a black tablecloth, will be available for each exhibitor. No electricity is provided. Exhibits are competitive. Eligible for the Educational Top Exhibitor Award.

#### **CLASS 1.**

#### **Exhibit 1: Extra terrestrial friends**

What do you know about turtles where we live? Let's explore their ancestry, lifestyles, and contribution to the environment.

#### **Exhibit 2: Mi nature's sequence**

This exhibit will explore the history of the most distinguished European mathematician of the Middle Ages, Leonardo of Pisa, later to be known as Fibonacci. The viewer will learn about the effect of the Fibonacci sequence in nature, poetry, and art with live samples and photographs. The Golden Spiral's connection to the Fibonacci sequence will be made evident.

#### **Exhibit 3: What climate change means for Mi garden!**

Climate change is affecting every aspect of gardening, including what plants thrive where, which can survive multiple years, whether trees bear fruit, and what pests are threatening. Let's find out more!

**DIVISION IV YOUTH and SPONSORED GROUP:**  
**Mi generations**



**YOUTH AND SPONSORED GROUP RULES**

1. The reader is advised to carefully review all General Rules, pages 5-7, as prerequisite for this part of the Schedule.
2. **NGC Youth Exhibit policies and guidelines are found in the *Handbook*, Chapter 9 (pages 87-89).**
3. **Youth design exhibits must be created solely by the exhibitor and are evaluated using the Design Scale of Points (see *Handbook* page 130).**
4. Exhibitors in the Sponsored Group Section must be members of Manistee County's Senior Center, must be created solely by the exhibitor, and are evaluated using the Botanical Arts Artistic Crafts Scale of Points (see *Handbook* page 131).

## YOUTH SECTION AND CLASSES

### Section A: **Mi creepy crawlers**

Children create fresh floral arrangements. Materials are supplied by the Committee. Exhibits will be placed on a section of a table covered with a black tablecloth provided by the Committee. Entries are limited to a 15" by 15" space. Each age group is eligible for Youth Top Exhibitor Award. Limited to four entries per class, but there are no required number of exhibits.

Class 1. Ages 6 to 8 years **Poppin' into action**

Class 2. Ages 9 to 12 years **Spreading Mi wings**

Class 3. Ages 13 to 18 years **Metamorphosis**

Judged using Design Scale of Points (see page 130 in *Handbook*).

#### DESIGN SCALE OF POINTS

All Designs	
Criteria	Points
<b>Conformance</b>	
To Type	7
To Schedule Requirements	7
<b>Design Principles</b>	48
<b>Selection of Components</b>	8
<b>Organization of Components</b>	8
<b>Expression</b>	8
<b>Distinction</b>	14
<b>TOTAL</b>	100

## SPONSORED GROUP SECTION AND CLASSES

### Section B: **Mi best friends**

Host clubs for MGC District 5 Fall Meeting will provide leadership and workshops to enable members of Manistee Senior Center to create Botanical Arts Artistic Crafts. The Committee supplies all materials. Exhibits will be placed on a section of a table covered with a black tablecloth provided by the Committee. Entries are limited to a 15" by 15" space. Limited to four

entries in Class 2 and Class 3. Entries are judged using Botanical Arts Artistic Crafts Scale of Points (*Handbook*, page 131).

<b>Artistic Crafts Scale of Points</b>	
<b>Criteria</b>	<b>Points</b>
Conformance	14
Design	48
Craftsmanship / Technique	12+12
Distinction	14
<b>TOTAL SCORE</b>	<b>100</b>

Class 1. **Holding Mi place**

Decorated bookmarks

Class 2. **Leaf it to me**

Decorated journals

Class 3. **Mi memory garden**

Decorated shadow boxes



## DIVISION V BOTANICAL ARTS:

### Mi creative side



### BOTANICAL ARTS RULES

1. The reader is advised to carefully review all General Rules, pages 5-7, as prerequisite for this part of the Schedule.
2. **No artificial plant material is permitted in any exhibit.**
3. **The rules for Botanical Design are found in the *Handbook*, Chapter 10 (pages 93-94).**
4. **The rules for Artistic Crafts are found in the *Handbook*, Chapter 10 (pages 94-95).**
5. **The rules for Photography are found in the *Handbook*, Chapter 10 (pages 95-96).**
6. **The Scales of Points for judging Botanical Arts Design, Artistic Crafts, and Photography are found in the *Handbook* (pages 130 and 131).**

## BOTANICAL DESIGN RULES, SECTION AND CLASSES

1. Must be a member of a garden club that is a member of Michigan Garden Clubs, Inc. if exhibiting in the Botanical Design Section.
2. Exhibit must contain some fresh and/or dried plant material. Only dried material may be treated except for Class 3 (freedom of expression).
3. No artificial, endangered, or locally invasive plant material may be used.
4. A 3" x 5" index card listing plant material must be included with the design entries.
5. Exhibits will be judged using the Design Scale of Points (see page 130).

### DESIGN SCALE OF POINTS

All Designs	
Criteria	Points
<b>Conformance</b>	
To Type	7
To Schedule Requirements	7
<b>Design Principles</b>	48
<b>Selection of Components</b>	8
<b>Organization of Components</b>	8
<b>Expression</b>	8
<b>Distinction</b>	14
<b>TOTAL</b>	100

## SECTION A. **Welcome to Mi home**

Exhibits are eligible for the Botanical Arts Design Award. Limited to four entries per class.

### CLASS 1. **Mi front door**

A traditional or creative wreath. Exhibits will be staged hanging vertically from a hook against a neutral-colored wall (white or tan). Maximum space allotted is 28" by 28", but wreath may be smaller.

### CLASS 2. **Mi cup of tea**

A pot-et-fleur design with an emphasis on a combination of two or more flowering and/or foliage plants with roots growing in soil or other medium. Fresh cut flowers must be included. Other fresh and/or dried plant materials and/or components may be added e.g., fruits, vegetables, nuts, leaves, branches, and decorative wood. Exhibit will be placed on a 36" by 36" card



table, divided into four square sections. Maximum space allotted is 18" by 18", but design may be smaller. Underlay is permitted but not required. Table and black tablecloth provided by the Committee.

**CLASS 3. Free to be MiSelf**

A design where the exhibitor is free to explore the world of creativity with plant material and design. Some plant material must be used but there is no restriction on what can be done to the plant material. Fresh plant material may be painted, flocked, or dyed. Exhibit will be staged on a low pedestal, approximately 28" in height with an 18" diameter round surface on top. Pedestal will be staged in front of a neutral (white/tan) painted wall. Underlay is permitted but not required. Pedestal provided by the Committee.

**ARTISTIC CRAFTS RULES, SECTION AND CLASSES**

1. Must be a member of a garden club that is a member of Michigan Garden Clubs, Inc. if exhibiting in the Artistic Crafts Section.
2. The exhibit must contain some fresh and/or dried plant material. Only dried material may be treated.
3. No artificial, endangered, or locally invasive plant material may be used.
4. A 3" x 5" index card listing plant material must be included with the artistic craft entries.
5. Exhibits will be judged using the Artistic Craft Scale of Points.

<b>Artistic Crafts Scale of Points</b>	
<b>Criteria</b>	<b>Points</b>
Conformance	14
Design	48
Craftsmanship / Technique	12+12
Distinction	14
<b>TOTAL SCORE</b>	<b>100</b>

**SECTION B. Mi time outdoors**

Exhibits are eligible for the Botanical Arts Artistic Craft Award. Limited to four entries per class.

**Class 4. Walk in Mi shoes**

A decorated garden shoe provided by the exhibitor [NOTE: cannot use the shoe as a container for plant material]. Exhibit will be placed on a 36" by 36" card table, divided into four square sections. Maximum space allotted is 18"

by 18", but design may be smaller. Underlay is permitted but not required. Table and black tablecloth provided by the Committee.

#### Class 5. **Mi back yard sanctuary**

A decorated bird house to be provided by the exhibitor. The exhibit will be staged hanging on a hook attached to an upright tree form. Maximum space allotted is 15" height by 15" width by 12" depth (6 inches on either side of hook from which the bird house will be suspended). Exhibit may be smaller than maximum allotted space. Hook will accept weight up to 15 pounds.

#### Class 6. **Share Mi picnic**

A decorated picnic basket to be provided by the exhibitor [NOTE: cannot use the basket as a container for plant material]. Exhibit will be placed on a 24" wide by 30" deep section of a table. Underlay is permitted but not required. Table and black tablecloth provided by the Committee.

### **BOTANICAL ARTS PHOTOGRAPHY SECTION:**

#### **BOTANICAL ARTS PHOTOGRAPHY RULES, SECTION AND CLASSES**

1. The exhibit is intended to stimulate gardening interest, photographic abilities, and objectives of the National Garden Clubs, Inc. (NGC). Any amateur photographer may enter the show.
2. The Schedule determines the type of photography, exhibit, staging and number of entries per class. **All entries must be pre-registered with the Photography Chair since entries are limited (see page 4).**
  - a. All exhibits must relate to horticulture, gardening, landscape, conservation, preservation, ecology, environment, etc.
  - b. Image size is determined by the Schedule.
  - c. Images will be matted using white mats supplied by the Committee. No frames are permitted.
  - d. Images will be displayed vertically at eye level for judging and viewing against a black background.
  - e. Images must be submitted with a 3" x 5" card that provides details pertinent to the photo i.e., photographed plant material, if identifiable, with current botanical scientific names; photo location; rationale (how related to NGC objective or theme of the class).
  - f. The photo may be enhanced to include in-camera changes and post-production changes to include cropping, filters, adjustments, and/or dark room techniques. Professional printing is permitted.

- g. First, second, third, and honorable mention ribbons may be awarded in accordance with the NGC Standard System of Awarding. Refer to *Handbook* (page 39).
- h. Judging consideration shall include creativity, composition, technical merit / quality of the image, conformance / interpretation, distinction / WOW factor.
- i. Judging shall be done by three recognized photography experts such as camera club judges, photography instructors, professional photographers, or qualified photography judges.
- j. Entries are not eligible for exhibiting credits.
- k. Exhibits will be judged using the Photography Scale of Points.

<b>Photography Scale of Points</b>	
<b>Criteria</b>	<b>Points</b>
Conformance	5
Interpretation of Class Title	10
Composition	25
Artistry / Creativity	25
Technical Achievement	25
Distinction / Impact (WOW Factor)	10
<b>TOTAL SCORE</b>	<b>100</b>

## **SECTION C. Mi Camera's Eye View**

Eligible for a Botanical Arts Photography Award. Limited to four entries per class.

### **Class 7. Through the eyes of an ant**

A close-up photo of any growing plant, flower, tree, shrub, vegetable, etc.

7.a. 5" x 7" color or black/white photo

7.b. 8" x 10" color or black/white photo

### **Class 8. Soaring birds eye view**

A landscape, garden, environmental, or ecological scene

8.a. 5" x 7" color or black/white photo

8.b. 8" x 10" color or black/white photo

## Class 9. **Critters large and small**

A photo of any type of fauna found in the State of Michigan (e.g., mammals, birds, amphibians, fish, reptiles, insects).

9.a. 5" x 7" color or black/white photo

9.b. 8" x 10" color or black/white photo

### **PROTECTED MICHIGAN NATIVE PLANTS**

The Michigan Department of Natural Resources has identified the Endangered (E), Threatened (T), and Probably Extirpated (X) plant species of Michigan, which are protected under the Endangered Species Act of the State of Michigan (Part 365 of PA 451, 1994 Michigan Natural Resources and Environmental Protection Act). The current list became effective on March 20, 2023, after extensive review by technical advisors to the Michigan Department of Natural Resources and the citizenry of the state. It can be found online at <https://mnfi.anr.msu.edu/species/plants>.

The following plants are only permitted if grown by the exhibitor or obtained in a legal manner and so marked on the entry card.

#### **DEPARTMENT OF NATURAL RESOURCES LIST**

All native club mosses, gentians, orchids, and trilliums.

##### **BOTANICAL NAME**

##### **COMMON NAME**

*Baptisia leucophaea*

Cream Wild Indigo

*Camassia scilloides*

Wild Hyacinth

*Chelone Obliqua*

Purple Turtlehead

*Iris lacustris*

Dwarf Lake Iris

*Nelumbo lutea*

North American Lotus

*Phlox maculata*

Wild Sweet William

*Sarrenca purpurea ssp. hererophylla*

Yellow Pitcher Plant

*Viola pedatifida*

Prairie Birdfoot Violet

#### **THE MICHIGAN GARDEN CLUBS, INC. LIST**

##### **BOTANICAL NAME**

##### **COMMON NAME**

*Aquilegia canadensis*

Wild Columbine

<i>Arisaema triphyllum</i>	Jack-in-the-Pulpit
<i>Caltha palustris</i>	Cowslip, 'Marsh Marigold'
<i>Celastrus scandens</i>	Climbing Bittersweet
<i>Chimaphila umbellata</i>	Pipsissewa, 'Prince's Pine'
<i>Claytonia virginica</i>	Spring Beauty
<i>Clintonia borealis</i>	Spotted Wood Lily
<i>Cornus florida</i>	Flowering Dogwood
<i>Epigaea repens</i>	Trailing Arbutus
<i>Erythronium americanum</i>	Adder's Tongue, 'Dogtooth violet'
<i>Ilex species</i>	Michigan Holly
<i>Lilium michiganense</i>	Michigan Lily
<i>Lilium superbum</i>	Turk's Cap Lily
<i>Lobelia cardinalis</i>	Cardinal Flower
<i>Sanguinaria canadensis</i>	Blood Root
<i>Lythrum salicaria</i> (outlawed)	Purple Loosestrife

## ENTRY TAG COMPLETION INSTRUCTIONS

### Assemble supplies:

1. **Blank entry cards, one per exhibit. Refer to page 6 about how to obtain entry cards. Plenty will also be available on site at the Flower Show, but it is best to do them in advance of arrival at the show.**
2. **Sharpened pencil/s or waterproof ink pen. Accidents happen and water can really mess up an entry card. Don't let it happen to you!**
3. **This schedule.**
4. **Resources for botanical names of horticulture (e.g., websites, books, plant tags, etc.).**

**The scoring on the front and back of your card is for JUDGES only.**

- a. **Flower Show:** Write **Mi flora and fauna**
- b. **Date:** Write **9/12-13/25**.
- c. **Division:**
  1. Enter **I** for **Horticulture**
  2. Enter **II** for **Design**
  3. Enter **III** for **Education**
  4. Enter **IV** for **Youth / Sponsored Group**
  5. Enter **V** for **Botanical Arts**.
- d. **Section:** Enter the **Section** letter, e.g., **A, B, C**, etc. of the Division you are entering.
- e. **Class No.:** Enter the **Class Number**, e.g., **1, 2, 3**, etc. within the Section for the exhibit you are entering.
- f. **Variety or Class Name:**
  1. For **Division I Horticulture**, enter the full botanical name of your entry (Genus, specific epithet, cultivar, varietal; common name is optional)
  2. For **Division II Design, Division III Education Exhibits, Division IV Youth / Sponsored Group**, and **Division V Botanical Arts**, enter the **Class Name**.
- g. **Exhibitor:** Enter your **FIRST** and **LAST** name. You may affix an address label.
- h. **Address:** Enter your **address** unless it is on your address label.
- i. **Club:** Enter the **name of your Garden Club** if you are a member.



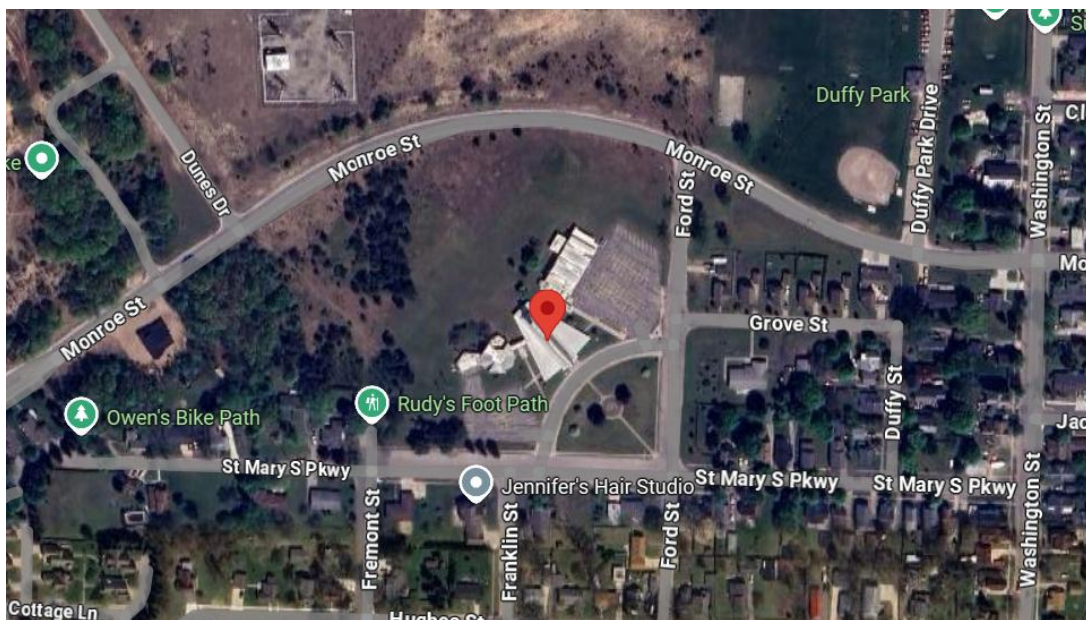


## LOCATION OF **Mi flora and fauna**

### **Wagoner Community Center / Manistee Senior Center**

260 St. Mary S. Parkway

Manistee, Michigan 49660



**GETTING THERE:** Use the GPS in your car or phone. Google Maps will get you there.

**MEETING:** The central church (pictured above) is where the meeting will be held.

**FLOWER SHOW:** The flower show will be held in a community room down the hallway from the main space.